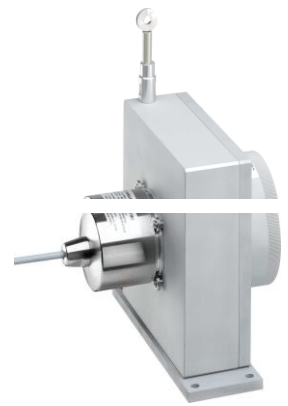


# CD150 absolute output - Measurement range 0 up to 6000 mm



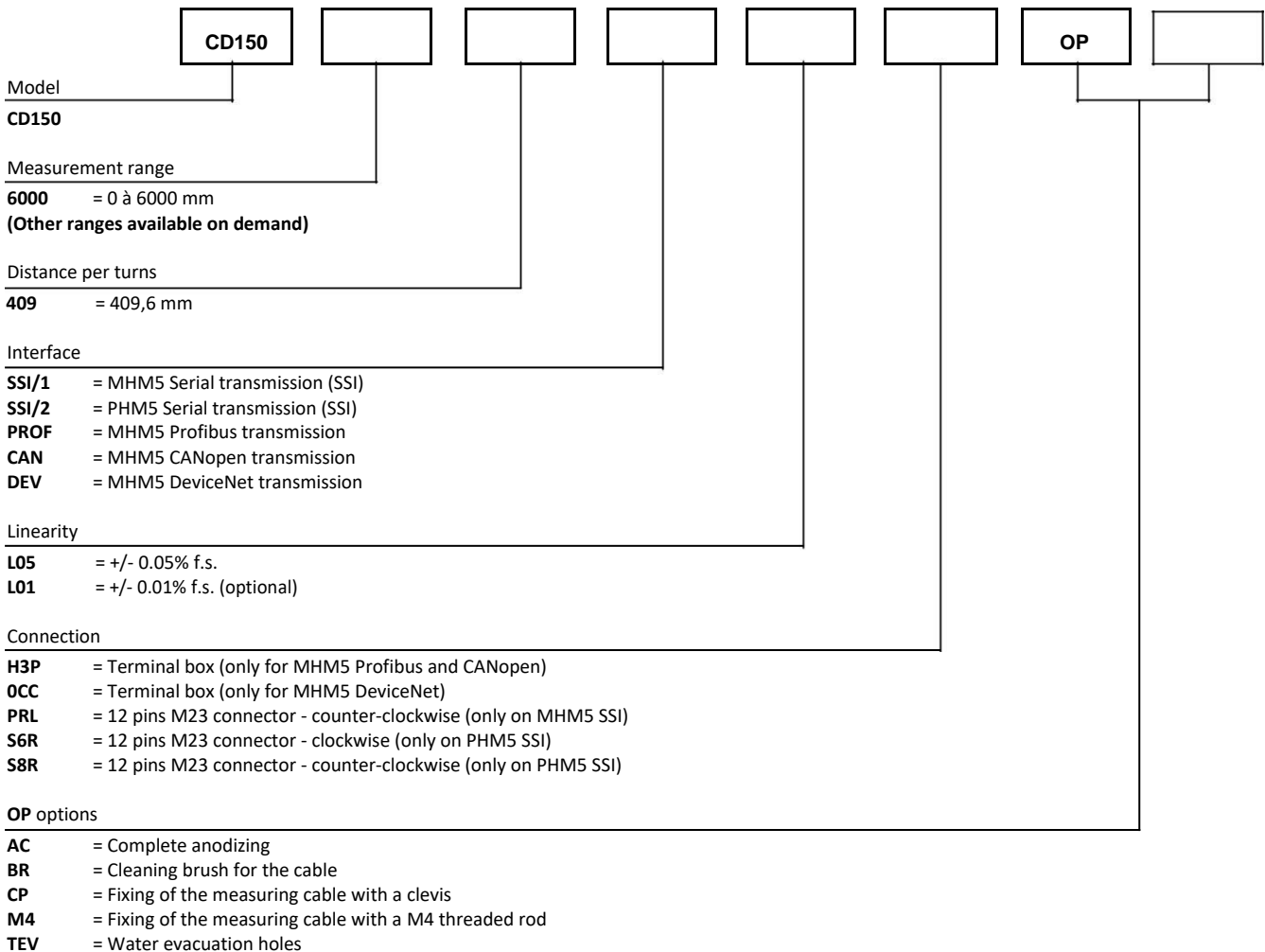
## Specifications:

|                       |   |
|-----------------------|---|
| Measurement range     | 0 up to 6000 mm   |
| Sensing device        | Absolute encoder (PHM5 or MHM5 series)  |
| Supply                | 10 - 30Vdc (MHM5)<br>5 - 30Vdc (PHM5)   |
| Interface             | SSI<br>Profibus<br>CANopen<br>DeviceNet   |
| Resolution            | 13 bits = 8192steps/turns   |
| Distance per turns    | 409,6 mm  |
| Material              | Body and cover - aluminium (RohS)<br>Measuring cable – Stainless steel            |
| Cable diameter        | 0,60 mm   |
| Connection            | Male connector M23 – 12 pin CW<br>Male connector M23 – 12 pin CCW<br>Terminal box |
| Standard linearity    | +/- 0,05% f.s.<br>+/- 0,01% f.s. (optional)                                       |
| Protection class      | IP64  |
| Max. Velocity         | 10 M/S  |
| Max. Acceleration     | 5 M/S <sup>2</sup> (before cable deformation)                                     |
| Weight                | ≈ 3000 g  |
| Operating temperature | -20° to +85°C   |
| Storage temperature   | -40° to +85°C   |

## Cable forces:

| Measurement range in mm | Min. pull-out force | Max. pull-out force |
|-------------------------|---------------------|---------------------|
| 6000                    | ≈ 10,00 N           | ≈ 13,50 N           |

## Ordering reference:



Reference example: CD150-6000-409-PROF-L05-H3P-OP-AC-M4



Tel : +33 (0)3 88 02 09 02 / Fax : +33 (0)3 88 02 09 03 / E-mail : info@ak-industries.com / Web : http://www.ak-industries.com

**Electrical characteristics:**

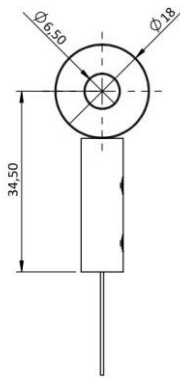
Please refer to the encoder data sheet.

**Options :**

**Cable attachment with a lug :**

**Standard**

The attachment lug is fixed with a M6 screw or a clevis.



**Cable attachment fitted with a M4 threaded rod:**

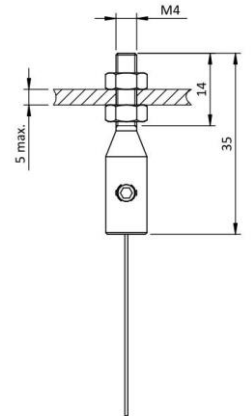
**OP-M4**

The rod attachment uses a threaded rod with 2 nuts (provided).

The required thickness of the plate does not exceed 5 mm.

**Caution**

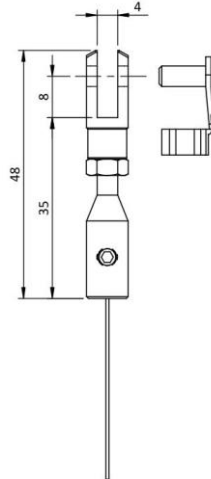
**Never screw the threaded rod into a fixed nut, a twist of the measurement cable would damage it.**



**Cable attachment with a clevis :**

**OP-CP**

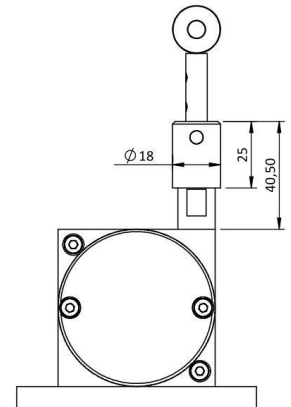
The attachment of the clevis is done using a pin (provided).



**Cable cleaning brush:**

**OP-BR**

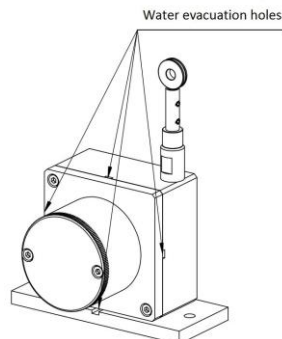
The cleaning brush wipes the cable in dusty or humid environments.



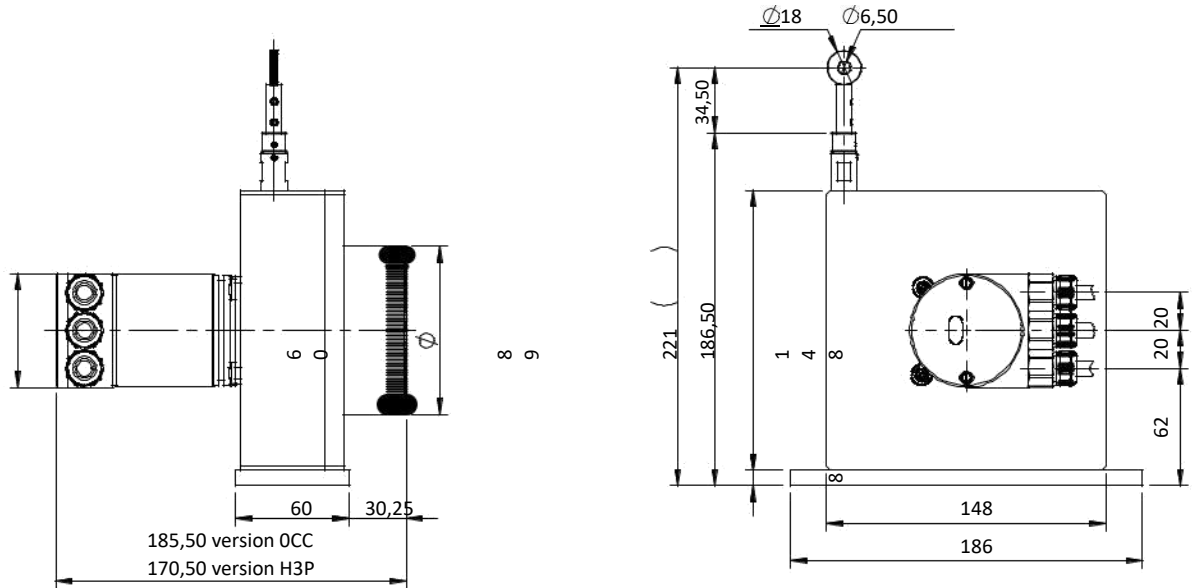
**Water evacuation holes:**

**OP-TEV**

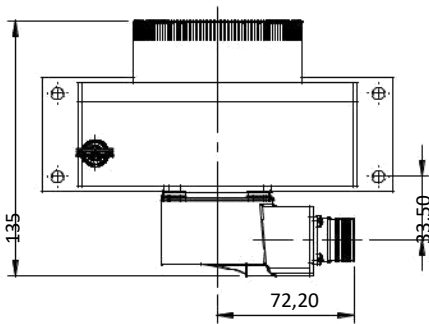
The holes allow the natural flow of fluids out of the sensor in order to avoid their accumulation in the system.



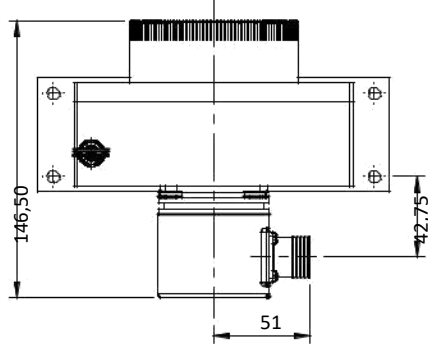
**Dimensional Drawing**



With PHM5 - SSI encoder  
S6R or S8R connection  
(Male connector M23 - 12 pin CW or CCW)



With MHM5 - SSI encoder  
PRL connection  
(Male connector M23 - 12 pin CCW)



With MHM5 - PROF/CANO/DNET encoder  
OCC or H3P connection  
(Terminal box)

