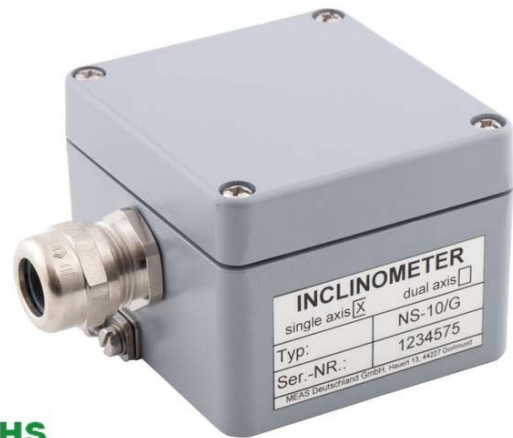


G-Series Inclinometer

Single axis inclinometer
Measurement range $\pm 10^\circ$
Switch output



The **G-Series** consist of a single axis conductive tilt sensor on a modern technology in environmentally protected and robust aluminum housing. The fast microcontroller works with a linearization and temperature compensation routines. This fully calibrated inclinometer offers a switch output signals. The inclination switch enables the angle of inclination of objects such as appliances, machines or motor vehicles to be monitored and emits an alarm signal when the angle is exceeded. The switch threshold can be set symmetrically by the customer in a range of $\pm 10^\circ$.

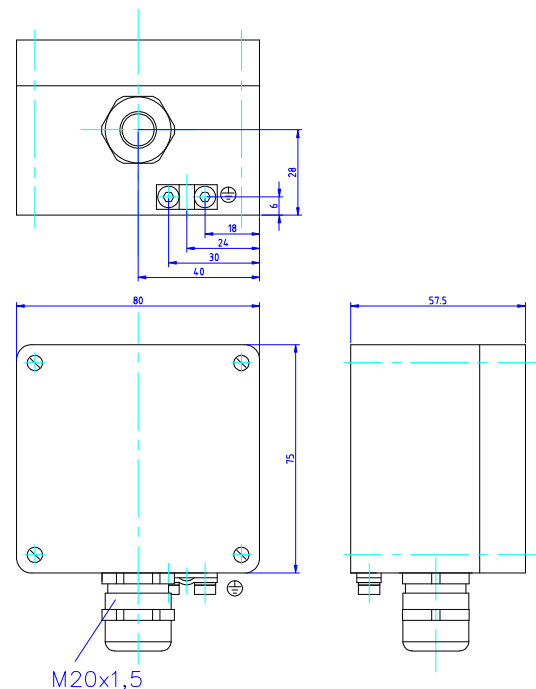
FEATURES

- Robust housing
- High accuracy
- Protection class IP 67
- Wall mounted
- Simple clamp
- EMC Protection

APPLICATIONS

- Building construction machines
- Building control
- Mobile and stationary cranes
- Forklift
- Alarm switch

dimensions [mm]

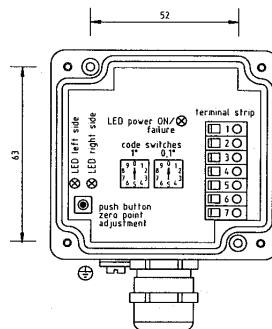
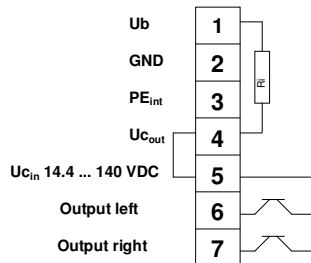


performance specifications

PARAMETERS

	Conditions	Min	Typ	Max	Units
Measurement range		-10		+10	°
Resolution			0.001		°
Switch threshold adjustable	Single step 0.1	0.1		9.9	°
Precision	T=25°C	-0.1		+0.1	°
Precision (absolute)	T=-25...+85°C	-0.25		+0.25	°
Switch output	load		10	50	mA
Switch voltage		+0.1		+140	VDC
Switch hysteresis		0.05		0.15	°
Terminal strip		0.08		2.5	mm ²
metric screw	Diameter M20, cable ø	8		12	mm
Voltage supply		+14.4		+30	VDC
Current consumption			15	20	mA
Operating temperature		-25		+85	°C
Storage temperature		-40		+85	°C
Protection class IP			67		IP
Weight			380		g
Dimensions	W x D x H		80 x 57 x 75		mm

Pinning:



For more details please use the product specification / application note / instruction manual.

The information in this sheet has been carefully reviewed and is believed to be accurate; however, no responsibility is assumed for inaccuracies. Furthermore, this information does not convey to the purchaser of such devices any license under the patent rights to the manufacturer. Measurement Specialties, Inc. reserves the right to make changes without further notice to any product herein. Measurement Specialties, Inc. makes no warranty, representation or guarantee regarding the suitability of its product for any particular purpose, nor does Measurement Specialties, Inc. assume any liability arising out of the application or use of any product or circuit and specifically disclaims any and all liability, including without limitation consequential or incidental damages. Typical parameters can and do vary in different applications. All operating parameters must be validated for each customer application by customer's technical experts. Measurement Specialties, Inc. does not convey any license under its patent rights nor the rights of others.

ordering info

PART NUMBERING	UNIT	SHORT DESCRIPTION
G-NSG-001	NS-10/G	single axis, range +/-10°, Vcc 14.4...30VDC, switch output