



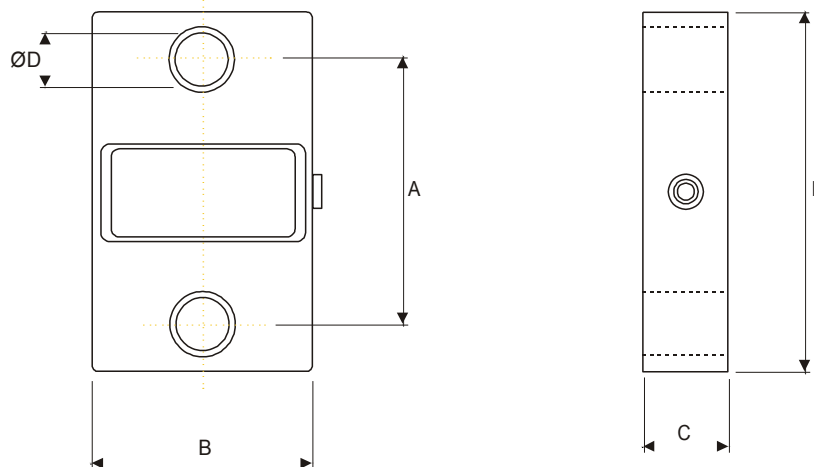
Options :
 Other ranges available on request
 Wireless Handheld unit
 Carry case for transportation and storage of link and handheld

- Range 1 to 500 tonne
- For use with standard shackles
- Sealed to IP67
- Range 200m
- Up to 255 Links can be used in one installation
- Auto Power Down

Capacities	1, 2, 5, 12, 25, 35, 50, 100, 250, 500	tonne
Full Load Output	1.5 (±0.25%)	mV/V
Zero Load Output	<±2.0	%
Excitation (Max)	7.2	V
Accuracy	<0.1	%
Repeatability	<0.05	%
Battery Life	150 (lithium)	Hrs
Auto power down	9	Hrs
Compensated Temp. Range	-10 to +40	°C
Operating Temp. Range	-20 to +60	°C
Temp. Coefficient on Zero	<0.0010	% Capacity/°C
Temp Coefficient on Span	<0.0010	% Capacity/°C
Safe Overload	150	%
Insulation	>500 @100Vdc	MΩ
Environmental Protection	IP66	

Specifications subject to change without notice

Type	A	B	C	D	E	WEIGHT (kg)
1, 2, 5 te	108	105	40	30	164	1.4
12 te	120	105	40	38	210	1.9
25 te	131	125	55	53	255	4
35 te	147	135	55	60	305	5
50 te	170	150	75	73	345	9
100 te	228	220	123	100	455	27
250 te	330	304	189	145	680	87
500 te	451	500	200	200	1015	225



All dimensions in mm