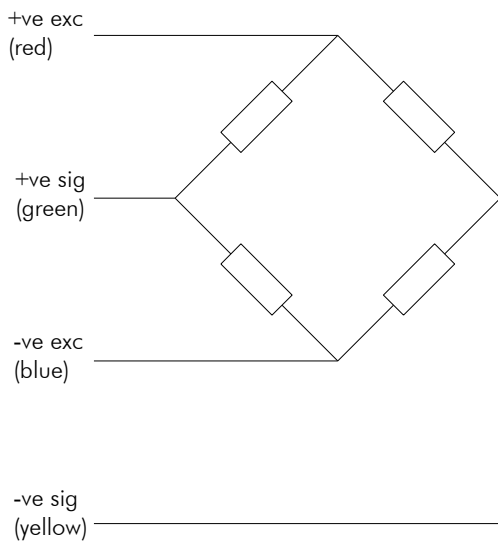


- Low height
- Stainless steel
- Sealed to IP68
- Compression load cell
- Integral load button
- Welded cover



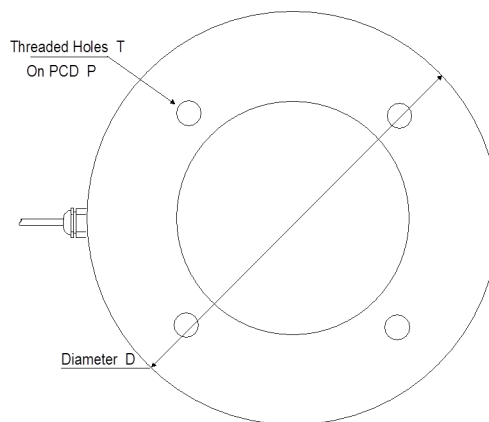
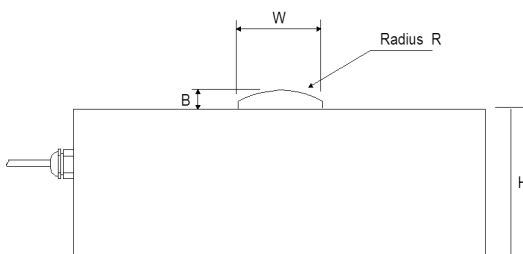
Capacities	0.5,1,2,5,10,20	tonne
Full Load Output	2.0 (±0.25%)	mV/V
Zero Load Output	<±2.0	%
Excitation (Max)	10 (15)	V
Accuracy	<0.25	%
Repeatability	<0.1	%
Input Resistance	750 (±20)	Ω
Output Resistance	700 (±2)	Ω
Compensated Temp. Range	-10 to +40	°C
Operating Temp. Range	-20 to +60	°C
Temp. Coefficient on Zero	<0.005	% Capacity/°C
Temp Coefficient on Span	<0.005	% Capacity/°C
Safe Overload	150	%
Insulation	>500 @100Vdc	MΩ
Environmental Protection	IP68	
Cable Length	4	m

Specifications subject to change without notice

Capacity (t)	H	B	W	R	D	T	P
0.5, 1	21	4	10	50	59	M3x7	42
2, 5, 10, 20	35	5	20	150	98	M6x18	72

All dimensions in mm

Options :
Atex approved versions.



LPCC
ATEX / IECEx Approved to
Ex ia IIC T6
Ex tD A20 IP68 T85C