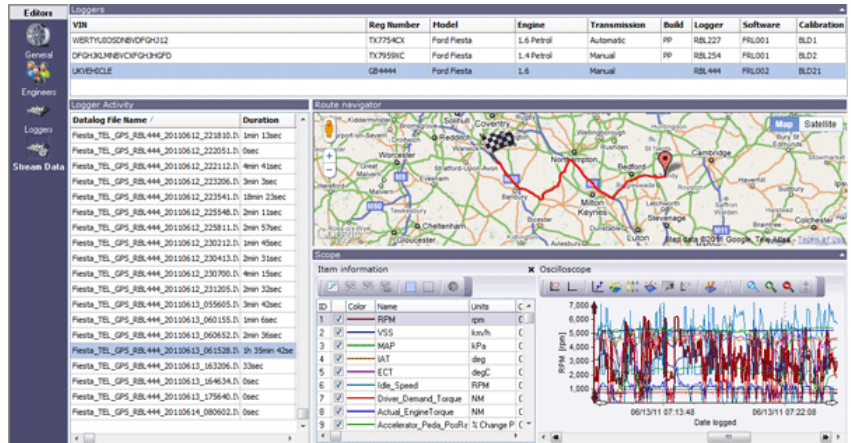


SureFleet

Data always available

SureFleet is Influx Technologies global data logger management system.

Utilising GPRS the system enables remote connections to Rebels for data streaming and reconfiguration.



Worldwide Rebel and fleet management

- Assign Rebels, vehicles, engineers and administrators within multiple projects.
- Search by date, vehicle or logger.
- Data and configuration file administration.

Remotes access

- GPRS for worldwide connectivity.
- Monitor Rebel and vehicle status and GPS location.
- Retrieve recorded vehicle data.
- Reconfigure the Rebel.

Secure central server

- No infrastructure required.
- Data collation in one environment for access anywhere when required.
- Redundant back up server system.

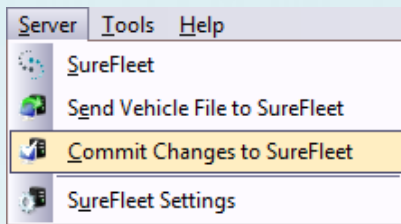
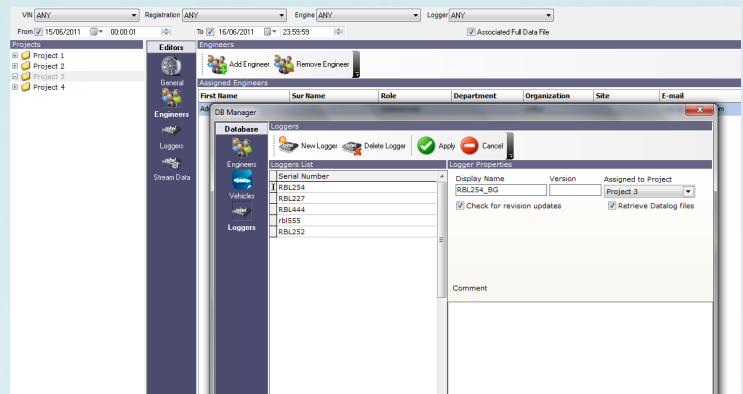
Data streaming

- Continuous transmission of key data items to the server.
- Live monitoring of data being recorded.
- Immediate review of data and indication of events.
- Powerful oscilloscope tool.
- Linked to full data files for detailed analysis in DiaLog.

Project Databases

SureFleet secure server allows the user to create and manage project and task specific databases. Quickly and simply assigning engineers and vehicle structures to tasks and projects.

SureFleet automatically files all data received in the appropriate projects, using the vehicle structures to identify the data being transmitted. This allows all engineers quick and easy access to any data recorded from anywhere in the world.



Name	Engineer	Created	Version	Revision Number	Comment
08001_AND_Signals_001	Administrator	6/21/2011		1	
08001_AND_Signals_002	Administrator	6/21/2011		2	
08001_AND_Signals_003	Administrator	6/22/2011		3	

Vehicle and Task Management

The SureFleet central server allows an engineer to rapidly reconfigure any Rebel datalogger. Updating the current datalogging requirements is as simple as uploading the revised vehicle structure to the server, selecting the Rebel dataloggers to be updated and designating a scheduled task. This will automatically remotely reconfigure the dataloggers, allowing rapid in-field project progression and adjustment.

Data Review and Analysis

SureFleet provides instant access to all live Rebel dataloggers in one central location. This provides engineers the ability to monitor vehicles and data loggers whatever their location. Information such as last recorded/current GPS location plotted on a map and the data files currently stored on the SD card and space remaining.

With SureFleet's unique Stream Data system however, it also makes live monitoring of key data items possible. Providing instant feedback on vehicle and logger performance and rapid notification of any vehicle events.

The SureFleet server also contains a fully functioning oscilloscope for initial data analysis. With the Stream Data linked to the full data files, detailed analysis of the relevant data is easy.

